

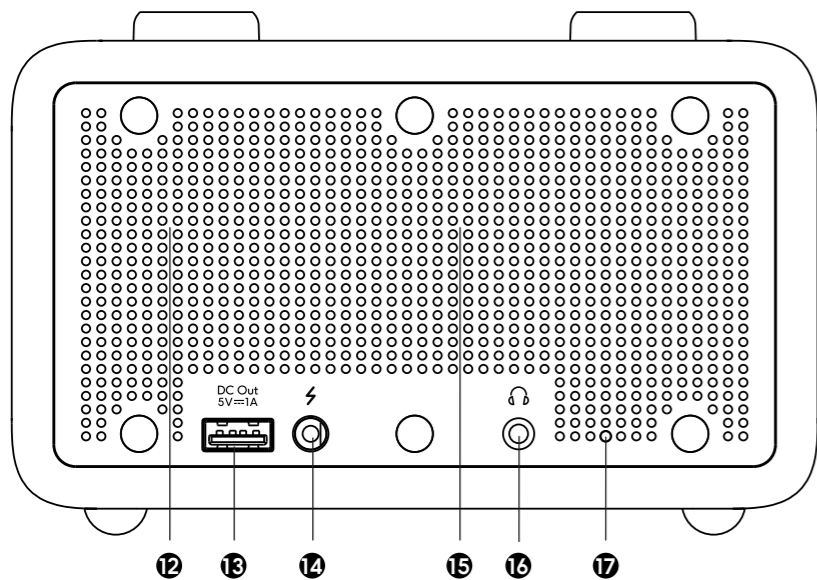
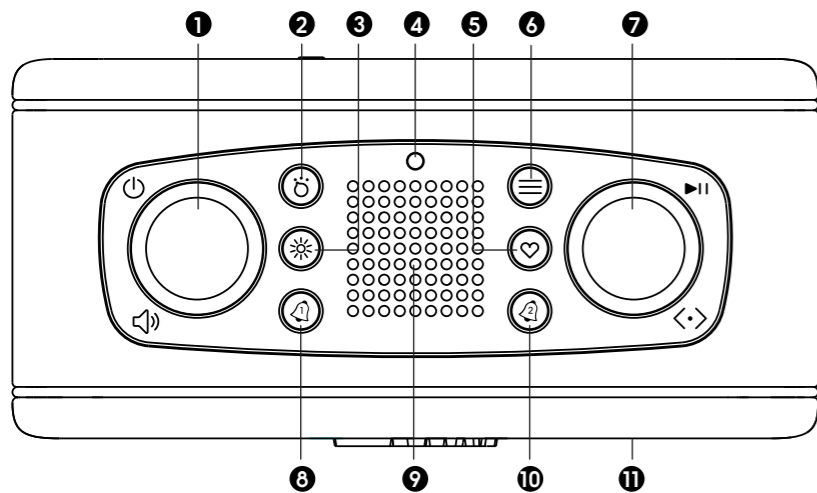
# What is in the Box?

Radio | mains adaptor | quick start guide | safety/warranty leaflet

## Features

- DAB+/FM RDS digital radio
- Bluetooth audio streaming from smartphone, tablet or laptop
- 20 radio station presets (10x DAB and 10x FM)
- 6 equaliser profiles and separate bass and treble
- AC adaptor included
- 40mm full range and 26mm tweeter with passive radiator
- LCD display with adjustable display brightness
- 2 alarms timers (DAB/FM/buzzer)
- Clock and sleep timer
- Stereo headphone output (3.5mm jack)
- USB charging of smartphone, tablet or similar device

## Controls



- |                               |                                   |
|-------------------------------|-----------------------------------|
| 1 Power/ Volume/Sleep         | 10 Alarm 2 button                 |
| 2 Mode button                 | 11 LCD display                    |
| 3 Brightness button           | 12 Full range loudspeaker         |
| 4 Ambient light sensor        | 13 USB 5V 1A output charging port |
| 5 Favourites button           | 14 DC input socket                |
| 6 Info/Menu button            | 15 Passive radiator               |
| 7 Tuning, Select & Navigation | 16 Headphone socket               |
| 8 Alarm 1 button              | 17 External aerial                |
| 9 Tweeter                     |                                   |

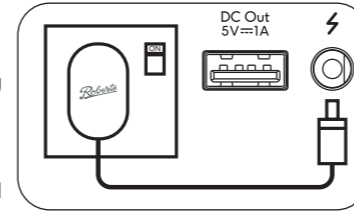
# STEP 1 - Plug in & play DAB radio

## A - Connect to the mains

Please read the safety leaflet provided before connecting your radio to the mains.

- 1 Place your radio on a flat surface.
- 2 Fully extend the aerial located on the bottom right hand corner.
- 3 Plug the cable from the mains adaptor into the DC power input socket. Plug the mains adaptor into a wall socket and switch on the socket.
- 4 A start up screen will be displayed and a scan of the Band III DAB channels will be carried out.
- 5 When a signal has been found, the current time will appear on the display.

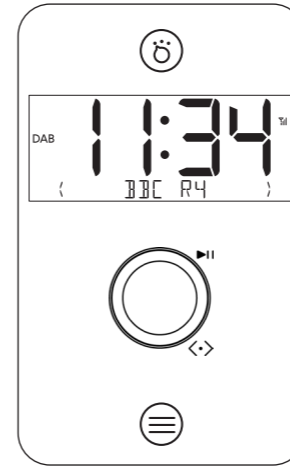
**Note:** If no signals are found it may be necessary to relocate your radio to a position giving better reception and carry out a scan for new stations.



## B - Select a DAB radio station

- 1 If needed, press and release the **Mode** button until the DAB mode is selected.
- 2 Rotate the **Tuning** control to step through the list of available DAB stations.
- 3 Press the **Tuning** control to select the station. Adjust the **Volume**.
- 4 Some radio stations may have one or more additional broadcasts associated with them. If these are available they will appear immediately after the main station.
- 5 Press the **Info/Menu** button to cycle through the various display options.

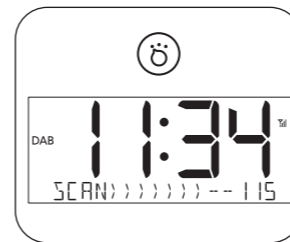
The display options are station name, scrolling text, program type, multiplex name, channel/frequency, bit rate, signal strength (the minimum signal marker (|) shows the minimum strength needed for good DAB reception), date.



## C - Scan for DAB stations

As time passes new stations may become available or you may have moved to a different part of the country.

- 1 Press and release the **Mode** button until DAB is selected.
- 2 Press and hold the **Info/Menu** button and then select 'SCAN' by pressing the **Tuning** control
- 3 Your radio will perform a scan of the Band III DAB channels. As new stations are found, they will be added to the list stored in the radio.



	A short press will switch your radio On or to Standby. Rotate to adjust the volume level. A long press will access the sleep timer when the unit is playing
	A short press will access each operating mode in turn.
	A short press will display information relating to the music being played. A long press will access the current menu system. Press Info/Menu button to go back to a higher level menu or if an error is made.
	Rotate clockwise or anti-clockwise to scroll menu items. A short press on Tuning/Select will select highlighted menu items. A short press in Bluetooth mode will play/pause audio.
	A short press will recall presets 1 - 10. A long press will allow preset stations 1 - 10 to be saved.
	Press to change the display brightness setting.
	A short press will change alarm status. A long press will access alarm settings.

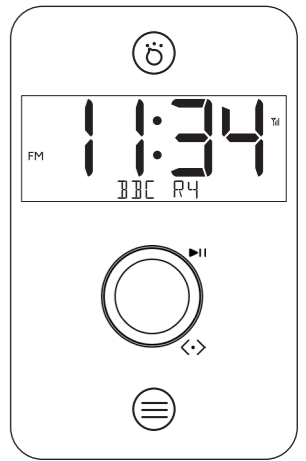
# STEP 2 - Play FM radio

## A - Search tuning - FM

- 1 Fully extend the aerial.
- 2 Press and release the **Mode** button until FM is selected.
- 3 Rotate the **Tuning** control clockwise or anti-clockwise to manually tune your radio. Press the **Tuning** control to scan upwards or downwards (direction is set by the last manual rotation). The radio will stop automatically when it finds a station of sufficient strength.
- 4 If the signal is strong enough and there is RDS data present then the radio will display the station name. Adjust the **Volume**.

• Press the **Info/Menu** button to cycle through the various display options.

The display options are station name, scrolling text, program type, frequency, audio type, signal strength, date.



# STEP 3 - Presets

## Preset radio stations

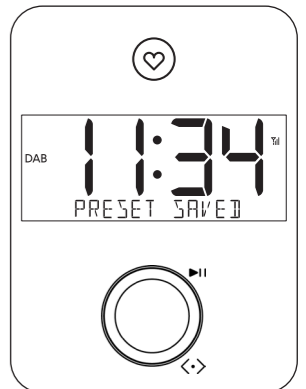
There are 20 memory presets, 10 for DAB and 10 for FM. Presets are remembered in the event of a power failure.

### To store a preset

- 1 Tune to the required radio station.
- 2 Long press on the **Favourites** button
- 3 Use the **Tuning** control to scroll to an unused preset or a preset you wish to change.
- 4 Press **Tuning** control to store. 'Preset Saved' will be displayed.

### To recall a preset

1. Choose DAB or FM mode.
- 2 Short press on the **Favourites** button.
- 3 Use the **Tuning** control to scroll to the desired preset.
- 4 Press the **Tuning** control to select it.



# STEP 4 - Bluetooth

## Connecting Bluetooth devices

- 1 Ensure **Bluetooth** is enabled on your smart device.
- 2 Ensure your radio is switched on. Press and release the **Mode** button until the Bluetooth mode is selected on your radio.
- 3 The radio will show that it is 'PAIRING'.
- 4 On your smart device select 'Revival Rest'. Once the connection is established, you may now play your music. Adjust the volume on your Bluetooth device or on your radio.

## Playing audio

- 1 The audio player in your smart device may be able to respond to the **Play/Pause**, **Next** or **Previous** track on the radio.
  - 2 Press the **Tuning** control to pause playback. Press the control again to resume playback.
  - 3 Rotate the control clockwise or anti-clockwise to skip to the next or previous track.
- Note:** Not all player applications or devices may respond to all of these controls.

## Connect a different device

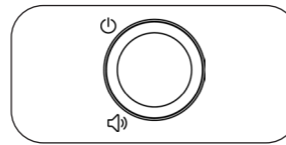
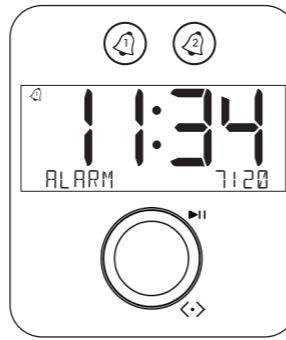
- 1 To connect a different device, long press on the **Info/Menu** button, select 'DISCONNECT', rotate the **Tuning** control to show 'Y' and press to confirm. Your radio will become discoverable by other devices.
- 2 To clear all Bluetooth pairings, long press on the **Info/Menu** button, select 'CLEAR PAIRING', rotate the **Tuning** control to show 'Y' and press to confirm.

continued overleaf...

## STEP 5 - Alarms

When in standby mode or on, the display will show a clock and the alarm state. Apply a short press to the **Alarm** buttons when the radio is on, or in standby, to toggle the alarms on/off.

- 1 Long press on the **Alarm** button to enter the alarm settings and display the 'ALARM' time.
  - 2 To set the time for the alarm to come on, rotate the **Tuning** control and press to set the hour. Repeat for setting the minutes.
  - 3 Choose whether the alarm 'MODE' is to be 'DAB', 'FM' or 'BUZZER'.
  - 4 If 'MODE' is set to either 'DAB' or 'FM', an option to set a radio 'PRESET' is available. Select either 'LAST LISTENED' or one of the saved presets '01-10' ('Empty' cannot be selected).
  - 5 Next, select the *days that the alarm will sound on*. Choose to set the days from 'DAILY' (the alarm will sound everyday), 'ONCE' (the alarm will sound once), 'WEEKDAYS' (the alarm will sound on Monday-Friday) or 'WEEKENDS' (the alarm will sound on Saturday and Sunday).
  - 6 Next, select the 'VOLUME' to set the alarm volume level from 9-32. The volume level will increase gradually upto the set level.
  - 7 Finally, select whether the alarm is 'ON' or 'Off'.
- The alarm volume can be changed during a sounding alarm.



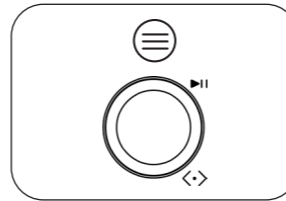
### Snooze

Snooze the alarm for 9 minutes by pressing either the **Tuning** control, **Power/ Volume** control or any button. Press the **Power/ Volume** control when snoozing to cancel the alarm.

## STEP 6 - Menu options

### Menu options

- 1 Long press the **Info/Menu** button to access your radio's menu system.
- 2 Rotate **Tuning** control to show menu options.
- 3 Press **Tuning** control to select menu options.
- 4 To exit a menu, press the **Info/Menu** button as needed.



### DAB menu

When in DAB mode, long press the **Info/Menu** button to access the following DAB menu options. Rotate the control and press to select an option.

**Recall Preset** - Access the favourites list.

**Save Preset** - Access the favourites list.

**Scan** - Choose 'SCAN' to scan the band III DAB channels.

**Manual tune** - Choose 'Manual Tune' and then choose the desired DAB channel. The signal strength will be displayed. The signal marker (II) shows the minimum strength needed for good DAB reception.

**Prune** - Choose 'YES' to remove any stations that are no longer available.

**DRC** - Choose from 'DRC OFF', 'DRC HIGH' or 'DRC LOW'. The DRC facility can make quieter sounds easier to hear when your radio is used in a noisy environment. **Note:** Not all DAB broadcasts use the DRC function.

**Station order** - Choose 'STATION ORDER' and then choose either 'ALPHANUMERIC', 'ENSEMBLE'.

**Sleep** - Your radio can be set to turn off after 15-120 minutes has elapsed.

**Alarms** - Access the alarm settings.

### FM menu

When in FM mode, long press the **Info/Menu** button to access the following FM menu options. Rotate the control and press to select an option.

**Recall Preset** - Access the favourites list.

**Save Preset** - Access the favourites list.

**Scan Setting** - Choose 'SCAN SETTING' and then choose 'DISTANT' (your radio will scan for both weak and strong signals) or 'LOCAL' (your radio will scan for stations with good reception).

**Audio Setting** - Allows selection of 'AUTO' or 'MONO'. 'AUTO' enables stereo to be played through headphones if a strong enough signal is present. If a station has a weaker signal and alternates between stereo and mono playback, selecting 'Mono' forces the signal to play mono.

**Sleep** - Your radio can be set to turn off after 15-120 minutes has elapsed.

**Alarms** - Access the alarm settings.

### System settings

Apply a long press on the **Info/Menu** button to access the current menu options. Rotate the control to 'SYSTEM' and press to select.

**Equaliser** - Choose from 7 sound profiles to suit the material that you are listening too.

**Time/Date** - Your radio will usually set the time using the DAB signal. Choose 'TIME' and the options include:  
SET 12/24 HOUR | AUTO UPDATE | SET TIME

**Brightness** - Access the 'BRIGHTNESS' settings of the display.

**Language** - Choose a desired language from the list.

**Factory Reset** - to completely reset your radio to its initial state perform a factory reset. Choose, 'FACTORY RESET' then 'YES'. All user entered settings will be erased.

**SW Update** - Software updates for the radio may be available in the future. Do not update unless recommended by customer support.

**SW Version** - The software display cannot be altered and is just for your reference. Choose 'SW VERSION'.

### Display Brightness

To set the brightness of the display, there are 3 settings.  
**TIMEOUT** - adjusts the length of time before the display dims in standby.  
**ON LEVEL** - adjusts the brightness when the radio is in use.  
**DIM LEVEL** - adjusts the brightness when the radio is in standby.

The product features a light sensor on the top panel to detect the ambient room brightness. When in 'AUTO', the display will be bright in a bright room, but will go dim in a dark room.

### Equaliser

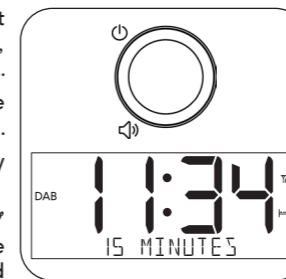
The sound on your radio can be adjusted to suit your personal taste for the material that you are listening to.

Select from 7 different profiles,  
**NORMAL** | **CLASSIC** | **JAZZ** | **POP** | **ROCK** | **SPEECH** | **MY EQ**.  
**MY EQ** enables 'TREBLE', 'BASS' levels to be set.

### Sleep

Your radio can be set to turn off after a preset time has elapsed. With the unit switched on, press and hold the **Power/ Volume** control. Rotate the **Tuning** control to select the required sleep time between 15-120 minutes. An indicator on the right of the display shows that there is an active sleep timer.

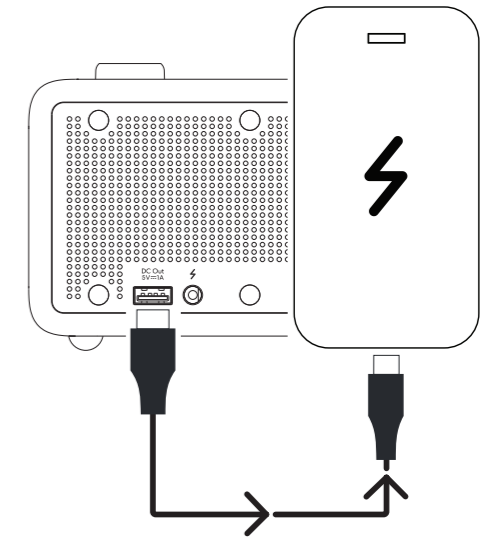
To cancel the sleep timer, enter the 'SLEEP' menu and select 'SLEEP OFF' or press the power button to cancel the sleep timer and switch your radio off.



## Other information

### USB Charging

You can charge your mobile device (e.g. MP3 player, mobile phone etc.) through the USB socket on this unit with a USB cable (not supplied). The maximum current for USB charging is 1A.



### Specifications

#### Power requirements

Mains (adaptor):  
100 - 240V ~ 50/60Hz  
DC in: 7.5V/1.6A  
DC Out: USB Type A. 5V/1A

#### ErP - Standby Power

The device has a power standby mode with a power consumption of less than 0.8W. After 15 min of inactivity in Bluetooth mode, the device will switch to standby mode.

### Circuit features

Headphone socket 3.5mm dia.  
Aerial System DAB/FM External aerial

Bluetooth standards A2DP, AVRCP, Bluetooth codecs supported SBC & AAC.  
Bluetooth BLE EIRP POWER (MAX.) 3.71dBm  
Bluetooth EDR EIRP POWER (MAX.) 3.68dBm

**Frequency coverage** FM 87.5 - 108MHz, DAB 174.928 - 239.200MHz  
Bluetooth 5.2 frequencies 2.402 - 2.480GHz

#### Product markings

DC Power input 7.5V/1.6A USB output 5V/1A  
~ This symbol indicates AC voltage. ≡ This symbol indicates DC voltage.

#### Mains adaptor

Manufacturer of AC Adaptor: Teka, Model: TEKA-TB075160BS, Input voltage: AC100-240V, Input AC frequency: 50/60Hz, Output voltage: DC7.5V, Output current: 1.6A, Output power: 12.0W, Average active efficiency: ≥ 88.72%, Efficiency at low load (10%) 85.26%, No-load power consumption: < 0.1W

Please handle with care. The leather-cloth finish may be susceptible to damage if mistreated. Avoid all contact with any abrasive material, chemical substances or cleaning solutions. Your radio may be wiped with a clean lightly damp cloth. **Please ensure that the product is unplugged from the mains socket outlet before attempting this procedure.**

Designed & Engineered in the UK  
Roberts Radio Ltd, Roberts House, Hanworth Lane, Chertsey, KT16 9JX, UK  
GlenDimplex Europe Ltd, Airport Road, Clongham, Co. Dublin, K67VE08, Ireland

Issue 3 2025-02-10  
ROBERTS RADIO LIMITED  
www.robertsradio.com  
© 2025 Roberts Radio Limited  
UK CA

Roberts

Revival Rest

DAB+/FM RDS/Bluetooth Alarm Clock Radio



Please read this guide and the safety/warranty leaflet before use